

# **Create Healthy Homes**

## **Environmental Design and Inspection Services**

Oram Miller, BBEC  
Certified Building Biology® Environmental Consultant  
“EMF” Consultant  
11693 San Vicente Blvd., #342  
Los Angeles, California 90049

Phone 310.720.7686  
info@createhealthyhomes.com  
www.createhealthyhomes.com

## **Spectrum Analysis and Oscilloscope Tracings Comparing Dirty Electricity Reduction Devices and Technologies**

**9/28/14**

This is preliminary report showing a comparison of various dirty electricity (DE) technologies using a Velleman oscilloscope and spectrum analyzer. Details about how these tracings were obtained will be forthcoming (line versus antenna).

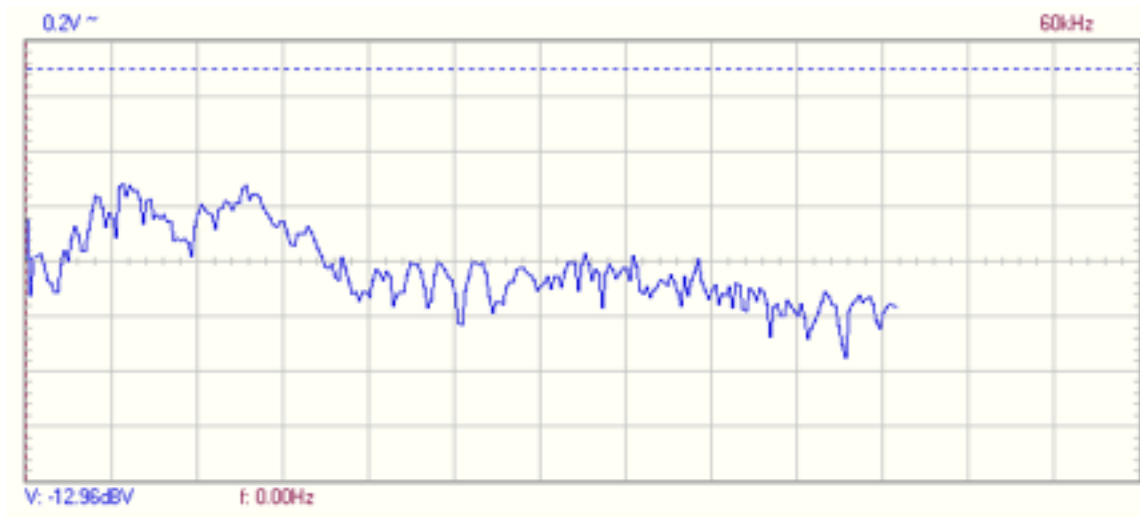
The devices we studied were a Greenwave filter, a PxDNA DE reduction device, and the Satic DE reducing technology. We did not have a Stetzer filter to test at the time.

I conducted this study with William Holland at a restaurant in Topanga, California on 8/29/14.

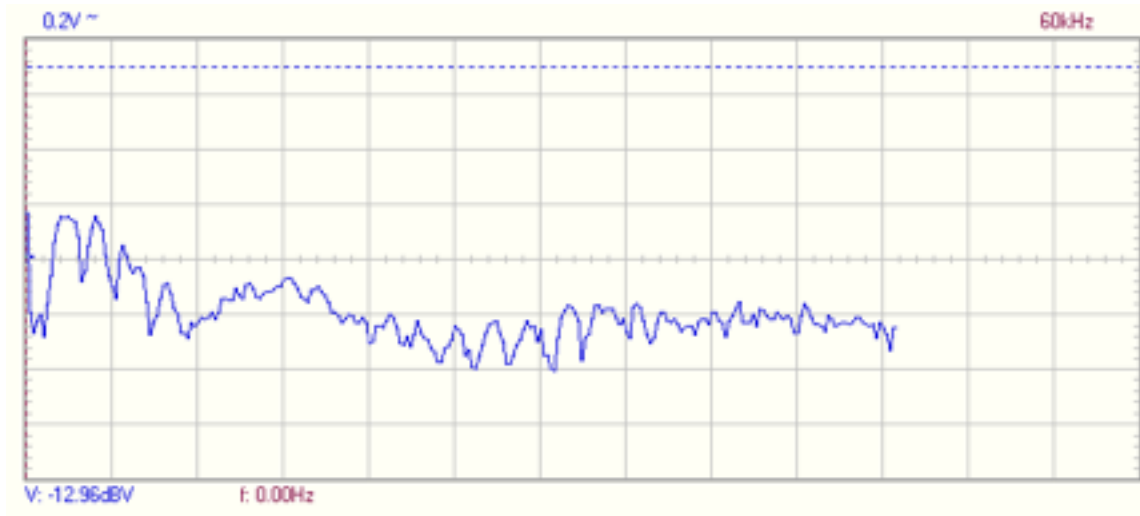
See page two for the tracings.

## Comparison Study of Dirty Electricity Reduction Technologies

This first image shows the initial tracing of dirty electricity from an unknown source on the spectrum analyzer from zero to 60 MHz:

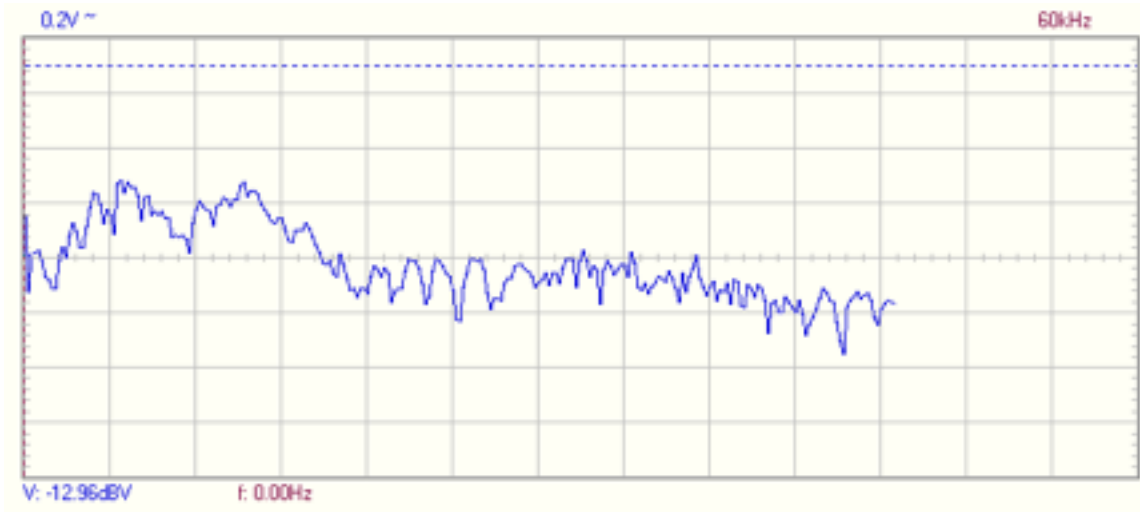


Here is the same tracing with a Greewave filter in place:

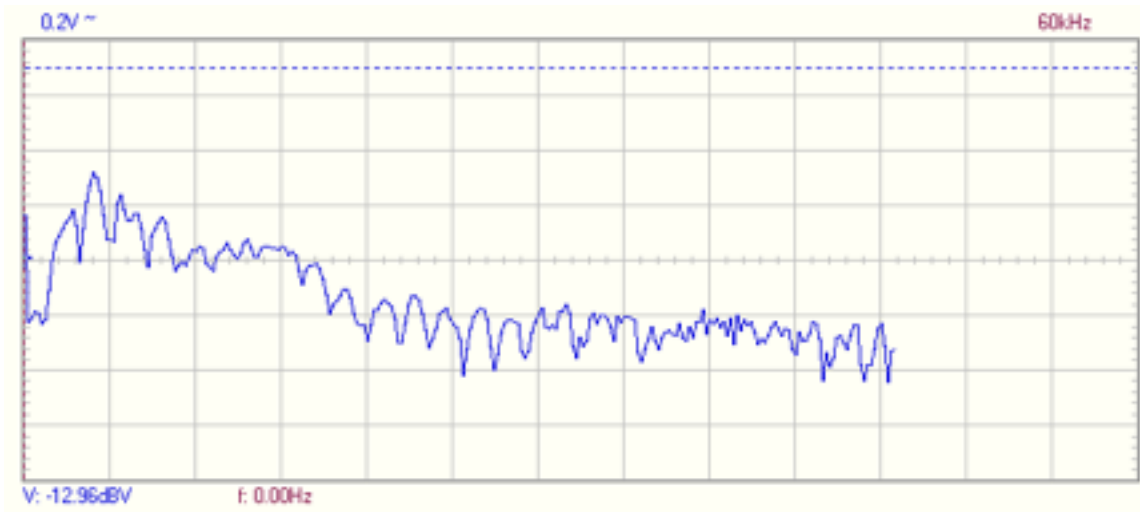


# Comparison Study of Dirty Electricity Reduction Technologies

Here again is the initial tracing:

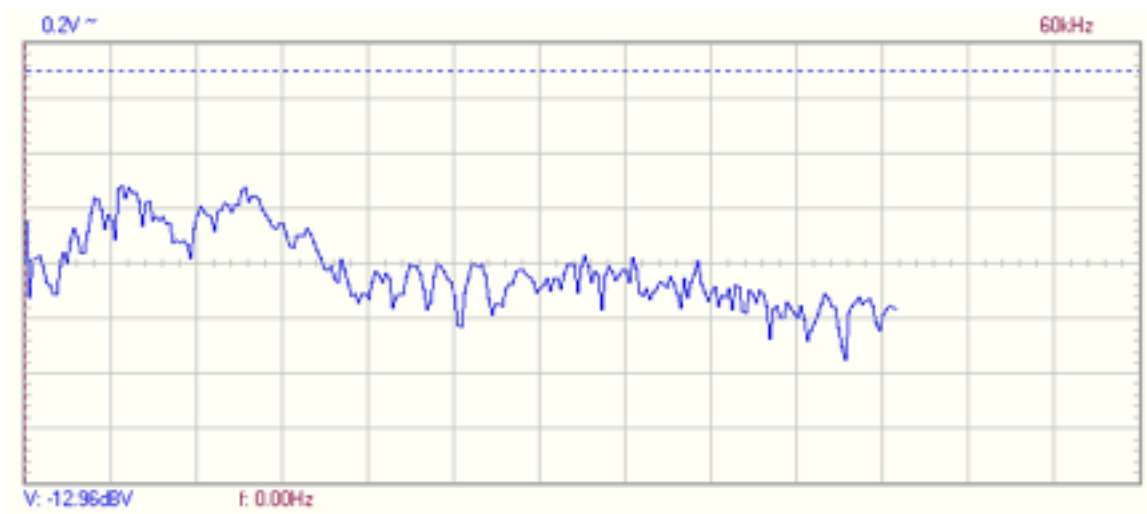


Here is the same tracing with the PxDNA in place:

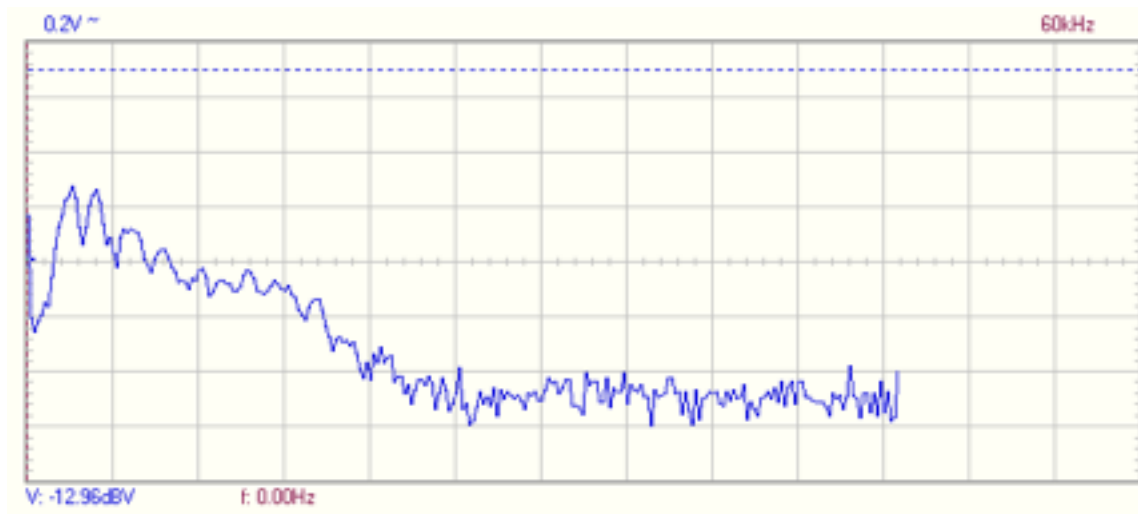


# Comparison Study of Dirty Electricity Reduction Technologies

Here again is the initial tracing:



Here is the same tracing with the Satic in place:

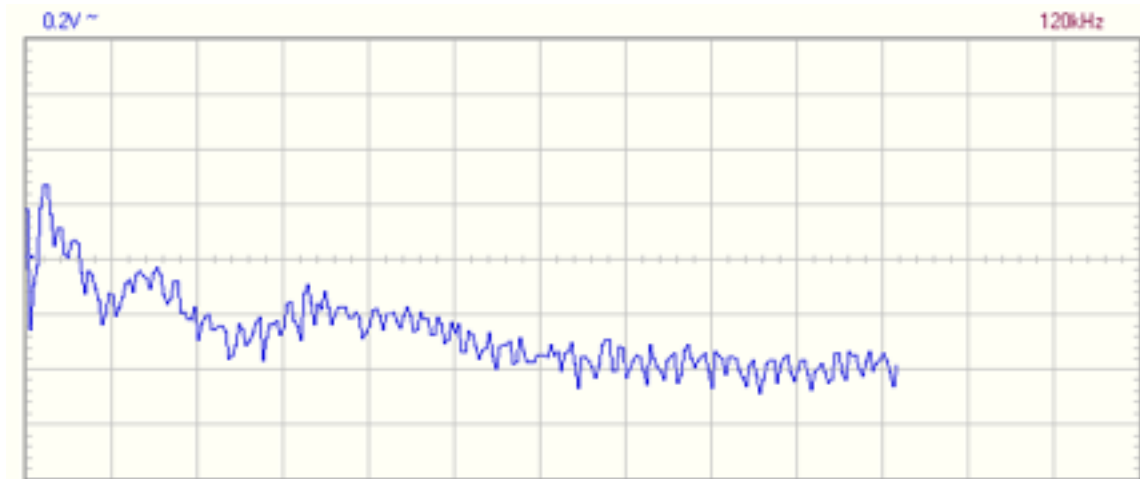


## Comparison Study of Dirty Electricity Reduction Technologies

Next is a more impressive reduction of DE with the Satic device noted in the spectrum analysis from zero to 120 MHz. Here is the initial tracing:



Here is the tracing with a Greenwave filter in place:

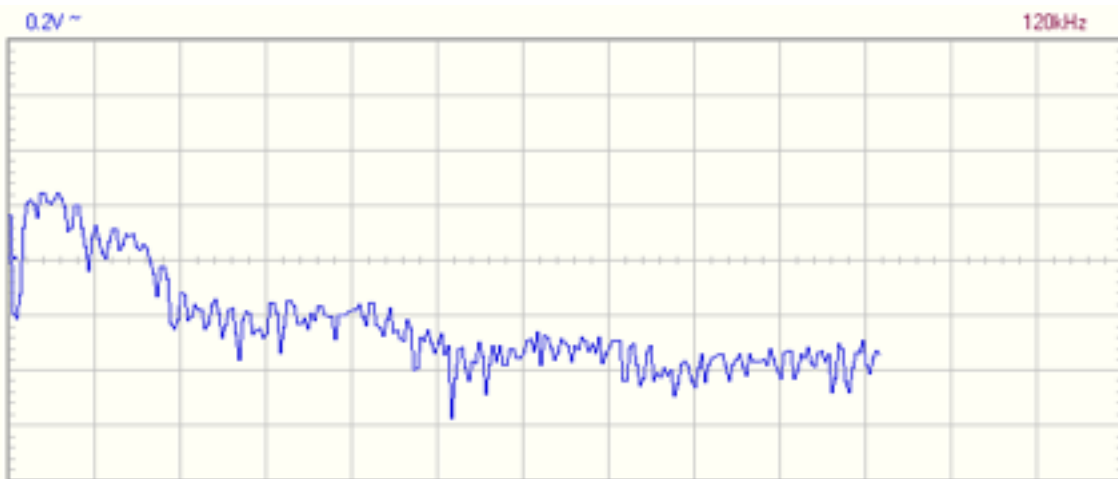


## Comparison Study of Dirty Electricity Reduction Technologies

Here again is the initial tracing:

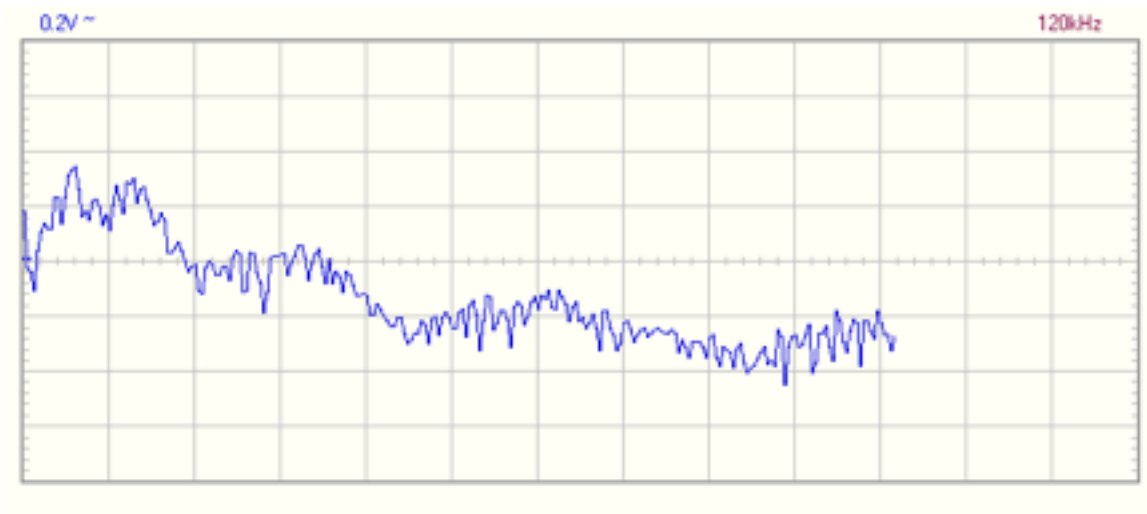


Here is the tracing with a PxDNA in place:

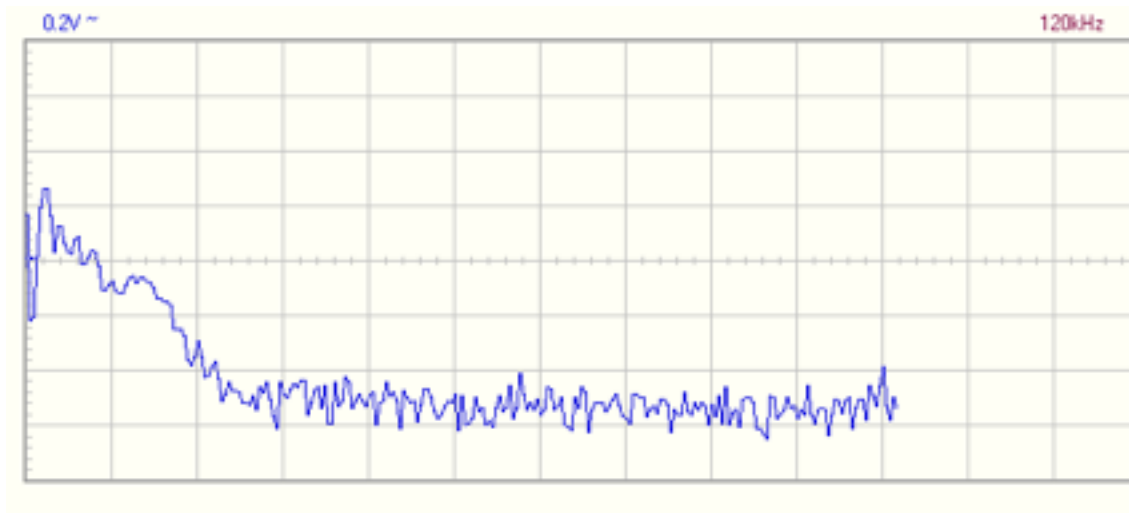


## Comparison Study of Dirty Electricity Reduction Technologies

Here again is the initial tracing:

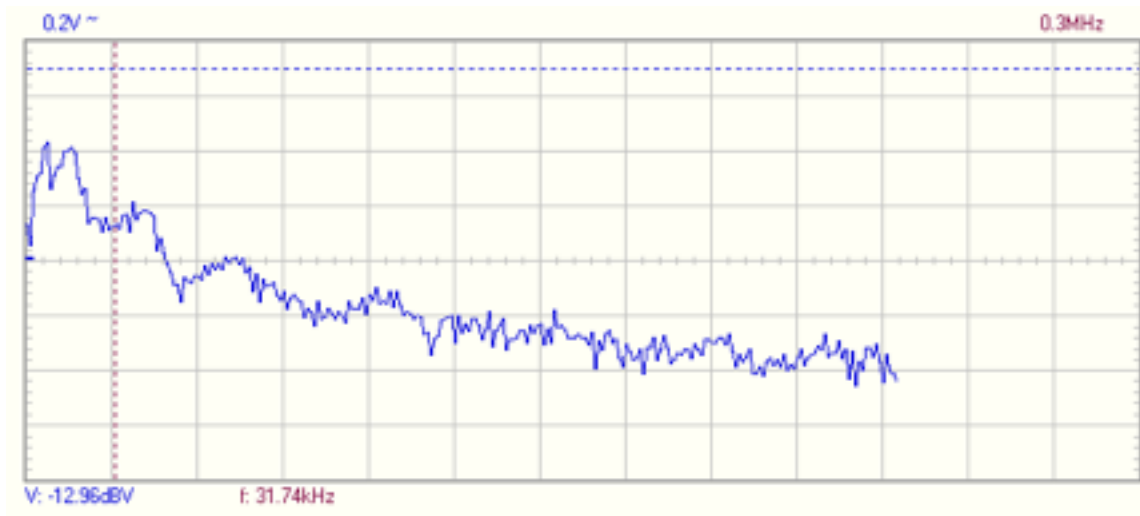


Here is the tracing with the Satic in place:



## Comparison Study of Dirty Electricity Reduction Technologies

Here is a spectrum analysis from zero to 300 MHz. Here is the initial tracing:



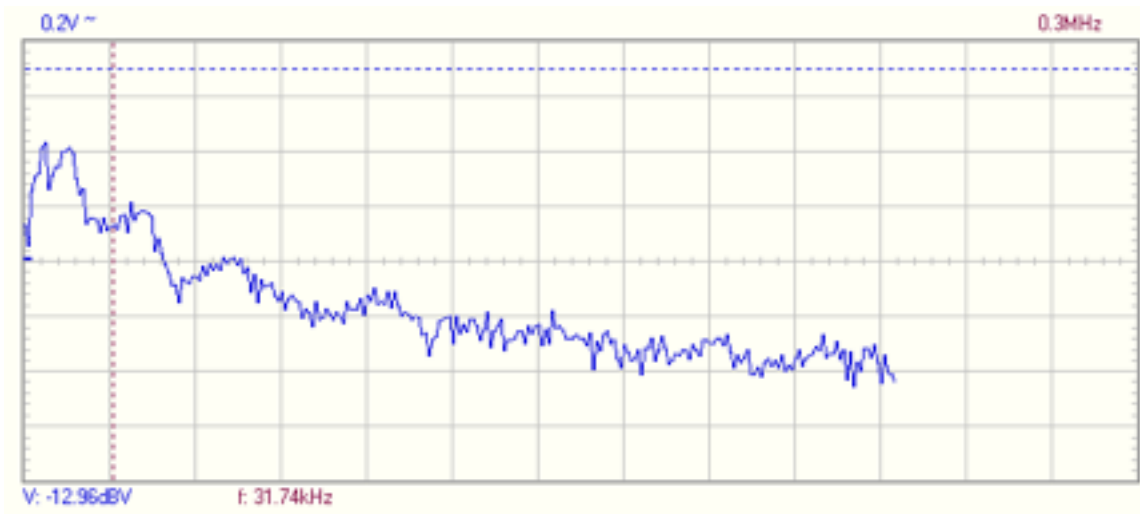
Here is the tracing with a Greenwave filter in place:



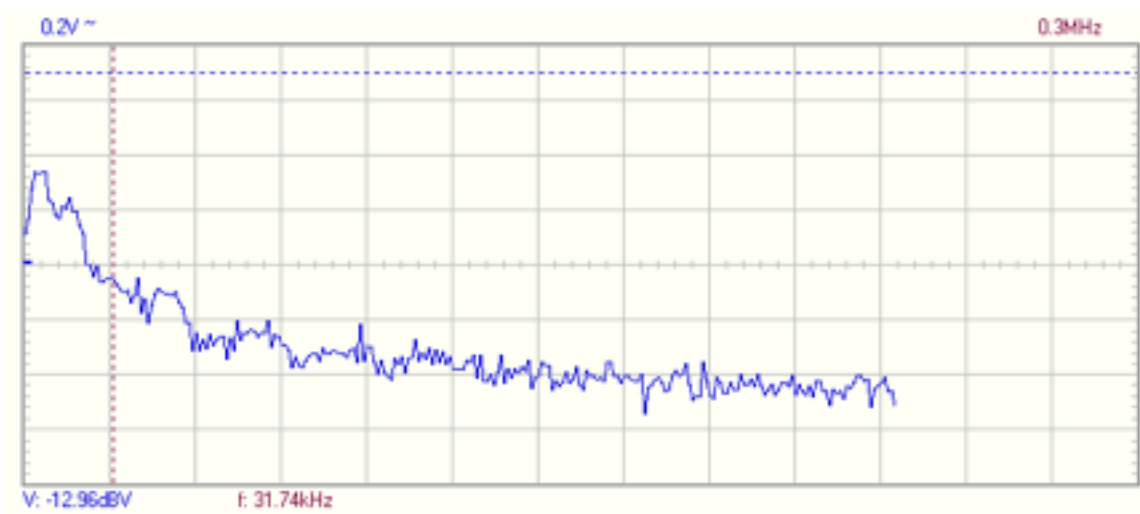


# Comparison Study of Dirty Electricity Reduction Technologies

Here again is the initial tracing:



Here is the tracing with a PxDNA in place:

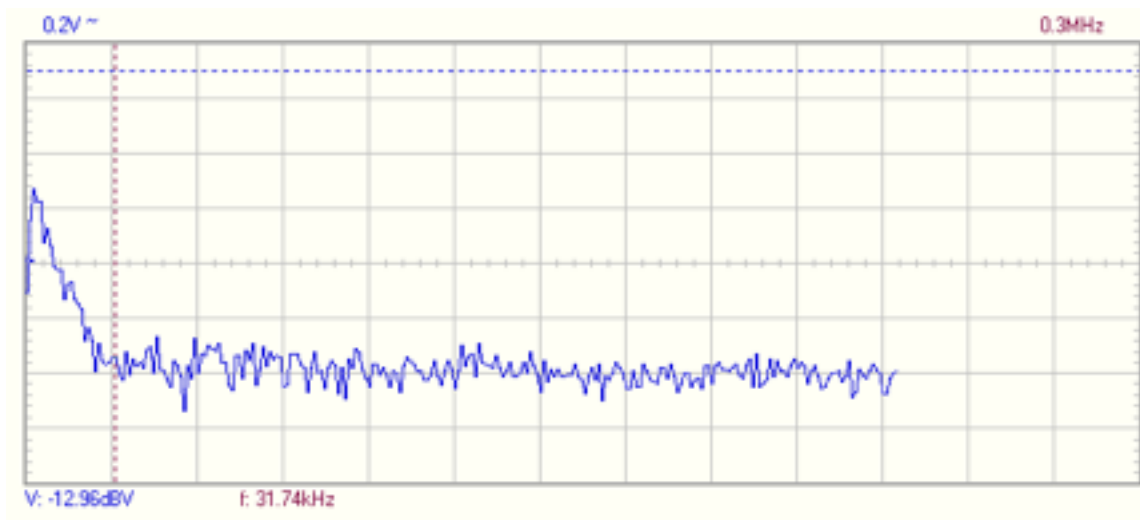


## Comparison Study of Dirty Electricity Reduction Technologies

Here again is the initial tracing:



Here is the tracing with the Satic in place:



Notice the virtual flattening of the tracing starting at roughly 31 kHz, the location of the vertical marker, and displayed in red at the bottom of the tracing. The hash seen on the initial tracing above 31 kHz is gone.

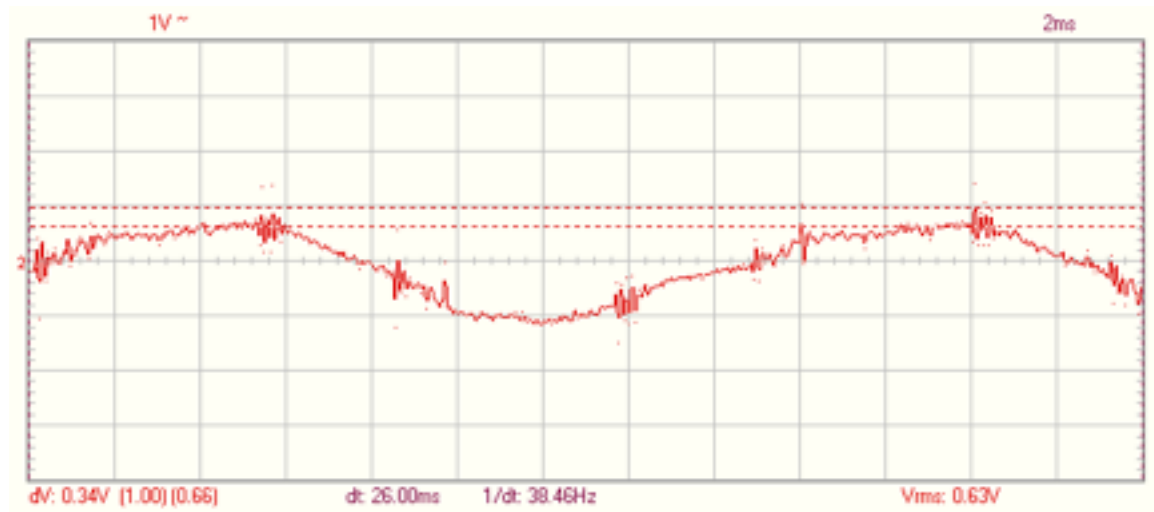
## Comparison Study of Dirty Electricity Reduction Technologies

Here are oscilloscope tracings with and without the Satic in place.

Here is the initial tracing without the Satic in place:

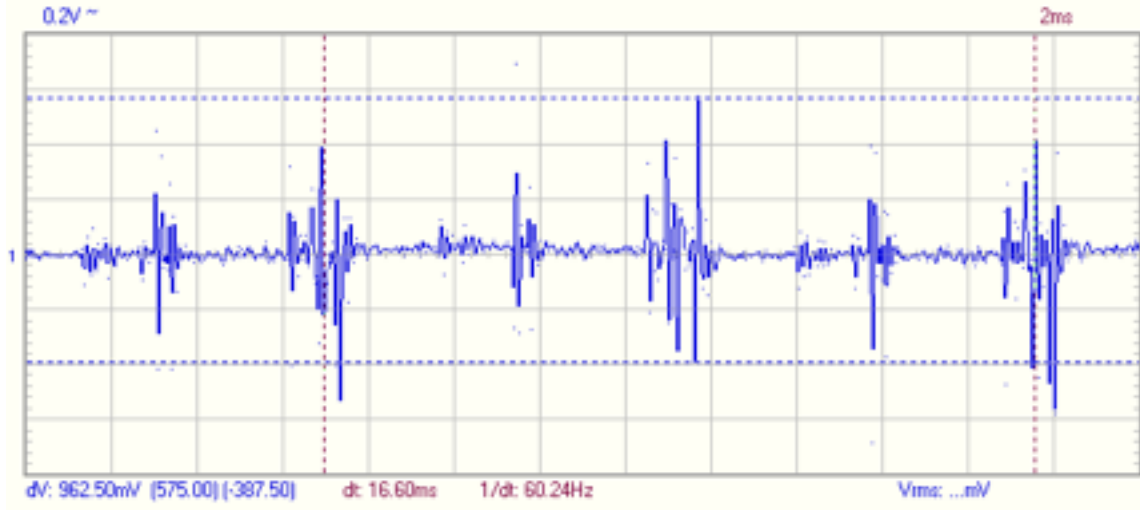


Here is the same tracing with the Satic in place:



## Comparison Study of Dirty Electricity Reduction Technologies

Here are further oscilloscope tracings. The first is with the Satic not in place:

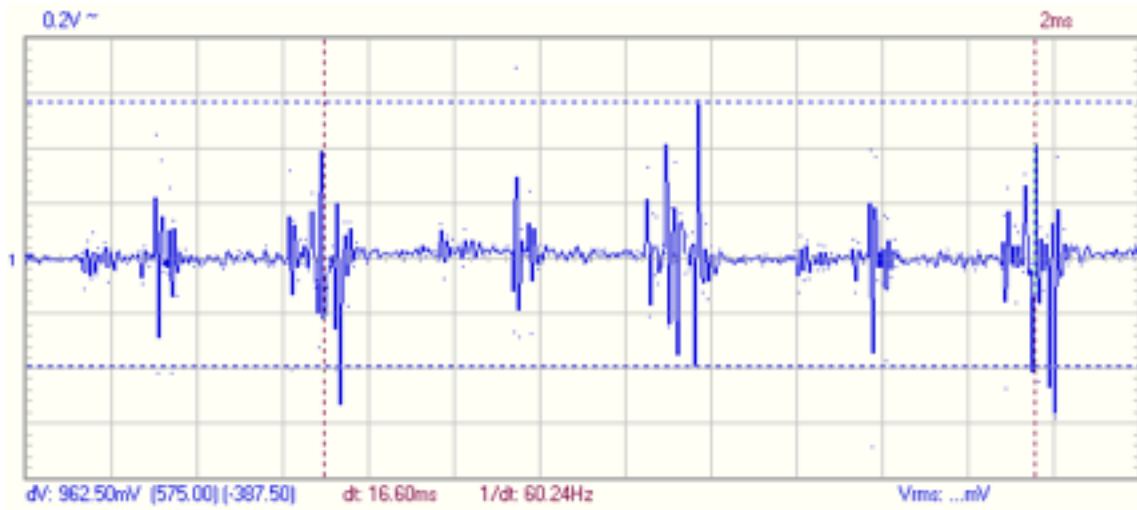


Here is the same tracing with the Greenwave in place:

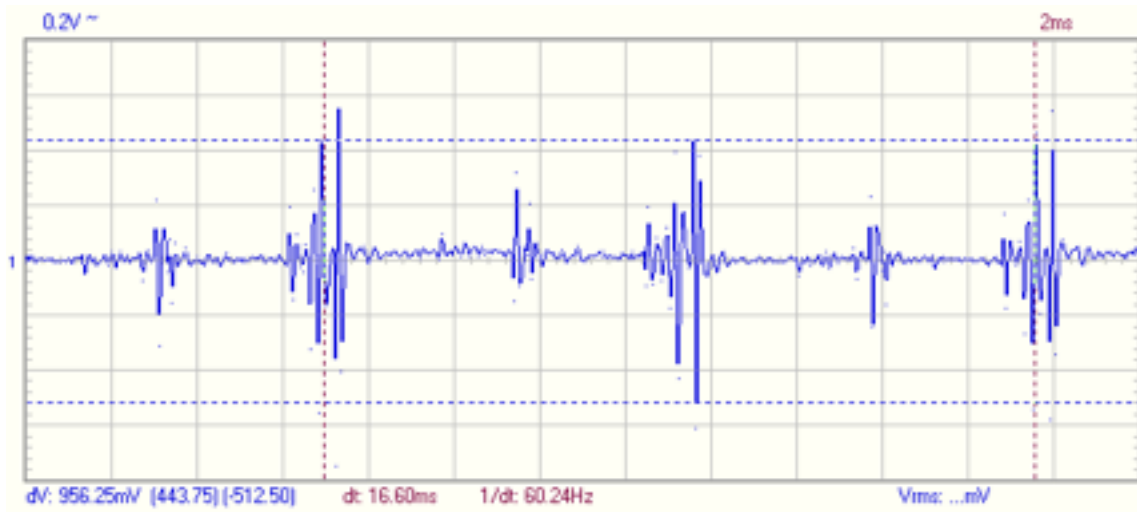


# Comparison Study of Dirty Electricity Reduction Technologies

Here again is the initial tracing:

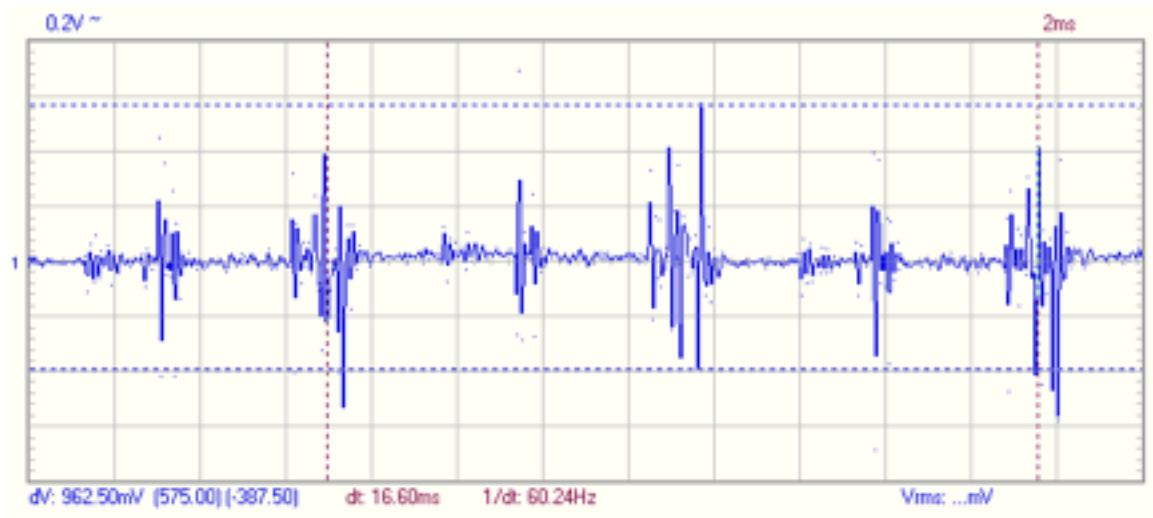


Here is the tracing with the PxDNA in place:



## Comparison Study of Dirty Electricity Reduction Technologies

Here again is the initial tracing:



Here is the tracing with the Satic in place:



According to this one parameter, the Greenwave filter seems to afford the most reduction in initial DE levels, however on every other comparison, the Satic device outperformed the other two devices.

Further analysis is recommended, including the use of a Stetzer filter.

Oram Miller, BBEC  
Certified Building Biology® Environmental Consultant  
11693 San Vicente Blvd., #342  
Los Angeles, California 90049  
Tel 310.720.7686

## Comparison Study of Dirty Electricity Reduction Technologies

[www.createhealthyhomes.com](http://www.createhealthyhomes.com)  
[info@createhealthyhomes.com](mailto:info@createhealthyhomes.com)